



KEYPRINT[®]
SECURITY LTD

NEW ONE POUND COIN

ARE YOU PREPARED?

An ASSA ABLOY group brand **ASSA ABLOY**

The New One Pound Coin

- The New £1 coin will enter circulation in March 2017
- This will be the only £1 coin produced in 2017
- 12-sided unique shape
- Highly secure coin to prevent counterfeiting

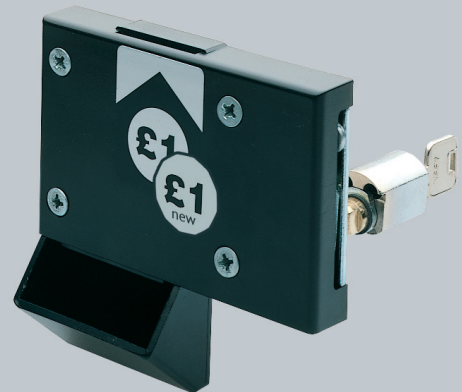


From September 2017 the current £1 coin will no longer be legal tender.

Abloy has a range of cost effective solutions to make sure you are fully prepared for this change.

ASSA Classic Coin Lock (New Version)

- Can operate with both old and new £1
- Locks can easily be converted from coin return to coin retain
- Versions available for use with tokens
- Easily replace or convert existing coin locks
- Left and right hand operations available
- Conversion kits available (Old Version pre July 2016)



ASSA E-lite Coin Lock (New Version)

- Can operate with both old and new £1
- Low cost lock
- Corrosion resistant, suitable for wet and dry areas
- Coin return only with integral coin tray
- Left and right hand operation available

Keyless Solutions

Mifare RFID Lock

- Keyless lock
- Easy to install and retrofit
- Attractive and durable locker security
- Battery operated with low battery warning light
- Suitable for lockers with metal, plastic and wooden doors



ASSA Digital Cabinet Lock - Coded 1.2

- Keyless security for personal and shared lockers
- Durable, ideal for high use areas
- Suitable for both wet and dry areas
- Easy to fit or retrofit to replace existing locks
- Battery operated, low battery warning light



Locks that are fit for purpose



ABLOY secures people, property and business operations on land, at sea, and in the air – in all circumstances.

ASSA ABLOY is the global leader in door opening solutions, dedicated to satisfying end-user needs for security, safety and convenience.

Abloy UK
School Street
Willenhall
West Midlands
WV13 3PW
+44 (0)1902 364500
www.abloy.co.uk



Keyprint Security Ltd,
45 Assembly Street,
Edinburgh
EH6 7BQ
0131 555 0909
www.keyprint.co.uk